

# DUPLEX ROLLERS AND TRENCH COMPACTORS

LP range

Atlas Copco





## GET IT DONE

Customers look to you for great compaction. Our job is to provide equipment that help you deliver. Together we create quality.

A customer that keeps coming back is the best praise a company can get. Our job is to help make your customers return for years to come. And, hopefully, we get the chance to serve you again.

When we get down to business there are two things we do that makes life easier for you and your customers. We create duplex rollers and trench compactors that work and we provide relevant service when you need it. When you start up the engine all

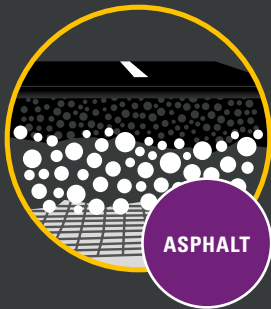
you should think about is how to do a great job on time and on money. Sleek design, hydraulic steering and transmission make handling easy and effortless. Even in confined spaces.

Thanks to vibration-reducing design you can work longer hours with our duplex rollers. The high centrifugal force and speed of the entire LP-range lets you get more done in less time. Of course our machines need maintenance from time to time. But

by using diesel engines from Hatz and cooling fan for hydraulic oil and battery we cut downtime. If you're in the rental business this means popular and easy to use products with a long service life. Talking about service, we have local support in over 170 markets, teams with product specialists and technicians with one main task: to give you support. That's how we work to help you keep your customers.

# KNOW YOUR SURFACE

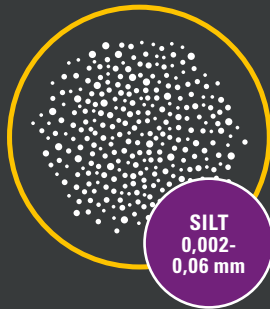
A great compactor can handle all soils. Here's how to tame mother nature's upper crust.



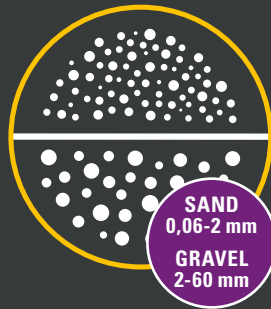
ASPHALT



CLAY  
< 0,002 mm



SILT  
0,002-  
0,06 mm



SAND  
0,06-2 mm  
GRAVEL  
2-60 mm

## ASPHALT

Compaction has a profound influence on asphalt performance. Compaction transforms the asphalt mix from a loose state to a compact surface that carry heavy loads. Efficiency of compaction depends heavily on the internal resistance of asphalt. Tools must be able to compact without leaving marks and water is important to create a smooth surface.

## CLAY STICKS TOGETHER

Clay particles stick together and you need high impact force to get the air out. Proper moisture is important when compacting. Wet clay can be moulded and dry clay becomes very hard and may crack under pressure. With its excellent traction and powerful engine the trench compactor makes compaction of clay easy.

## SILT NEEDS FORCE

Silt needs proper water content for good compacting. The cohesive soils, like clay and silt, have the smallest particles of all soils. Silt particles are larger than in clay but they are still small enough to require high energy for deep compacting. A powerful duplex roller together with your experience gets the job done.

## TAKE IT GENTLE

For sand and gravel you can achieve high-density compaction in either a dry or saturated state. The level of compaction depends more on grading than moisture. Too much compaction of sand and gravel is like beating a concrete wall with a sledgehammer. It can crush the material and reduce the load bearing capacity.

Layer thickness (m)

Passes



Layer thickness (m)

Passes



Layer thickness (m)

Passes



Layer thickness (m)

Passes



LP Surface capacity (m<sup>2</sup>/h)



LP Compaction capacity (m<sup>2</sup>/h)



LP Compaction capacity (m<sup>2</sup>/h)



LP Compaction capacity (m<sup>2</sup>/h)

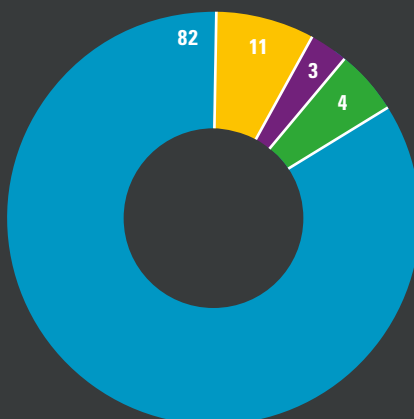


## QUALITY PAYS

The graph shows an average (%) over 1000 hours.

Total costs of ownership are all costs generated by a piece of equipment throughout its lifetime. We always strive to keep the total cost of ownership as low as possible by

providing highly productive equipment. The graph shows an average of over 1000 hours. This varies depending on local conditions.



Operator  
Investment

Spares  
Energy

# HEAVY MADE EASY

Work with ease on thin layers of granular soil and asphalt. Great for smaller jobs in confined areas.

Our range of walk-behind duplex rollers – the LP 6505 and LP 7505 – are fully hydraulic, both for vibration and travelling. The step-less throttle lever is placed on a vibration-reduced handle with good ergonomics to further optimize manoeuvrability. The compact design with high curb clearance, no overhang and sleek sides allows you to go close to walls, posts or edges – basically anywhere your work may take you.

The duplex roller is also equipped with a built-in hydraulic oil cooler that reduces wear on components and prolongs service intervals. The system also keeps the battery and polymer items, such as seals and rubber, cool for better performance and longer lifetime. Other standard features include hour meter and oil alert.

When working on different type of jobs you might need to switch vibration on and off. This is of course no problem for our duplex rollers. Two flip-up hoods facilitates service and battery charging. Both LP 6505 and LP 7505 are also equipped with scrapers to keep the drums clean, and hydraulic brakes with an automatic braking function for easy operation.



Duplex roller		LP 6505		LP 7505	
Fuel		Diesel	Diesel	Diesel	Diesel
Starter type		Manual start	Electric start	Manual start	Electric start
Operating weight	kg	747	767	981	1001
Frequency	Hz	55	55	57	57
Amplitude	mm	0,42	0,42	0,54	0,54
Centrifugal force	kN	20,3	20,3	27,3	27,3
Speed, forward/reverse	km/h	0-3,6/0-2,3	0-3,6/0-2,3	3,6	3,6
H/A vibrations, standard handle	m/s <sup>2</sup>	4,1	4,1	2,6	2,6
Sound power, guaranteed	dB(A)	107	107	107	107
Sound pressure at operators ear	dB(A)	88	88	88	88

#### Dimensions

Drum diameter	mm	400	400	400	400
Drum width	mm	650	650	750	750
LxWxH	mm	1110/2500x720x1250	1110/2500x720x1100	1110/2500x820x1260	1110/2500x820x1260

#### Engine

Engine brand		Hatz	Hatz	Hatz	Hatz
Model		1D42S	1D42S	1D50S	1D50S
Rated power	kW	7,2	7,2	7,9	7,9
Part number		3382 0002 22	3382 0002 20	3382 0002 44	3382 0002 45

Important: Full details of measurements are available in the Safety and Operating Instruction of the product (see table above for ID-number). It can be found on [www.acprintshop.com](http://www.acprintshop.com)

# Duplex rollers **Heavy made easy**

### Lifting made easy

The heavy-duty protection frame is equipped with a single point lifting eye for easy transportation.

### Protects the engine

Sleek design and great protection of all vital parts.

### Engine that delivers

Powerful engine with low fuel consumption and low emissions. Hour meter and oil alert for optimal control.

### Low vibration levels

Vibration-reducing handle. Easy handling. Push stop is standard.

**GREAT  
ERGONOMICS**

## LP 6505



### Quick start

Easy access to electric start.

**MORE  
UPTIME**

### Long life

Built-in hydraulic oil cooler extends component lifetime and increases reliability in tough, hot conditions.



## LP 7505

### Easy handling

Hydraulic brakes for easier handling and enhanced safety.

### Easy service

Flip-up hoods gives easy access to service points and battery.



**Heavier**  
+ 234 kg



**Wider**  
+ 10 cm



**More force**  
+ 7 kN



# GET UP, DOWN AND AROUND

Some compaction jobs are tougher than others. Whether steep, tight or loose soils the LP 8504 Trench Compactor will pull through.

Clay and silt are the toughest soils there is. Add tight corners, obstacles and steep slopes and you have the home turf of the LP 8504 Trench Compactor. Despite its capabilities to handle really tough conditions regular work in connection with backfills, parking lots or similar projects is handled equally easy.

Thanks to the unibody skid steer design a 90-degree corner in a tight trench is an easy manoeuvre. The

reliable Hatz engine will deliver all the power you ever need and the extra tall pads make sure you have both traction and compaction to handle your daily tasks. The Bluetooth remote control lets you work at up to 30 meter distance, far away from noise, fumes and risk of landslips. Since Bluetooth technology uses radiowaves, the remote control and the machine does not need a direct line of sight between each other. To keep you up and running at all times

each unit comes with two batteries and onboard charging. A cable control is also available.

We want to keep you profitable and an important part of that is uptime. The LP 8504 is equipped with a hydraulic oil cooler that reduces wear on components and prolongs service intervals. The same fan also cools the battery for extended life time.



Trench compactor		LP 8504	
Fuel		Diesel	Diesel
Starter type		Electric start	Electric start
Operating weight	kg	1573	1675
Frequency	Hz	32	32
Amplitude	mm	1,1	1,1
Centrifugal force	kN	48	48
Speed, working/transport	m/min	21/39	21/39
H/A vibrations, standard handle	m/s <sup>2</sup>	-	-
Sound power, guaranteed	dB(A)	106	106
Sound pressure at operators ear	dB(A)	-	-

#### Dimensions

Drum diameter	mm	535	630
Drum width	mm	630	850
LxWxH	mm	1875x630x1207	1875x850x1207

#### Engine

Engine brand		Hatz	Hatz
Model		2G40	2G40
Rated power	kW	12,5	12,5
Part number		3382 0000 81	3382 0000 80

Important: Full details of measurements are available in the Safety and Operating Instruction of the product (see table above for ID-number). It can be found on [www.acprintshop.com](http://www.acprintshop.com)

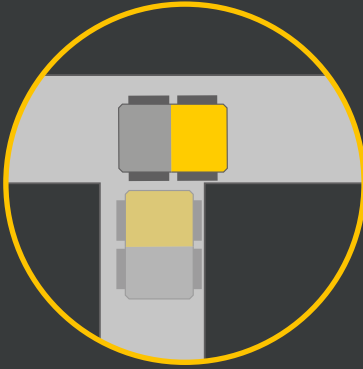


#### Accessories

Our trench compactors come with a number of accessories such as service kit and drum kit.

## Trench compactors **Get up, down and around**

The LP 8504 will be your partner of choice for compaction on steep or soft soils where most other fails. Despite its size and power it will get close to any obstacle and through the trickiest trench.



**90° turn**  
LP 8504 can take a 90° turn in a trench.



**0° turning radius**  
Counter rotation of compaction drums enables LP 8504 to make any diameter.

### **More uptime**

Fan reduces the risk of overheated hydraulic oil and contributes to long service intervals and low lifecycle cost.

**SAVE TIME & MONEY**

**Get noticed**  
Flashing light whenever the machine is in operation.

**Service made easy**  
Easy access to service points under the top cover.

**Easy transportation**  
Single lifting point with large lifting eye.

### **Stop in time**

Automatic push stop.

### **Get up and down**

The LP 8504 can go up and down 35-degree slopes.

### **Easy operation**

Turns tight corners thanks to counter rotating drums which permit rotation around its own axis.

### **Keep going**

The remote control comes with two cadmium-free batteries and onboard charging as standard. Higher efficiency, lower environmental impact.



### **Remote control**

The new bluetooth remote control system keeps you out of harms way. Thanks to individually paired units there is no risk of electromagnetic disturbance between the control and receiver. Bluetooth does not require a direct line of sight between the communicating devices.



# LP 8504



**Stay balanced**  
The unibody design increases stability due to constant center of gravity.

## ***COMMITTED TO SUSTAINABLE PRODUCTIVITY***

We stand by our responsibilities towards our customers,  
towards the environment and the people around us.  
We make performance stand the test of time.  
This is what we call – Sustainable Productivity.

[www.atlascopco.com](http://www.atlascopco.com)

The Atlas Copco logo consists of the brand name "Atlas Copco" in a white, italicized serif font, centered between two horizontal white bars of equal length.